

FEBRUARY 11TH, 2020

West Ashley Branch

Community Forum





Carl Wohlfeil, PE

Janette Alexander, AIA
Facilities, Charleston County



Angela Craig

Executive Director

Charleston County Public Library

Agenda

CCPL Referendum Overview

Public Libraries Today

Timeline and Conditions

Challenges and Limitations

Renovation Scope

Options and Opportunities

Questions and Feedback

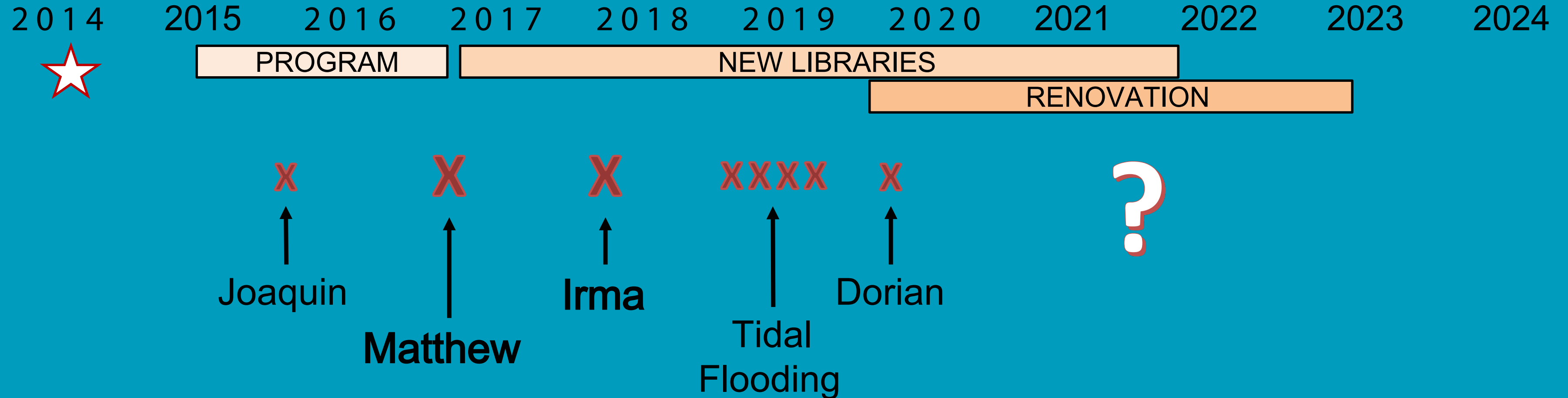


**2014 \$108.5
million
referendum calling
for new facilities
and the
renovation and
update of the
existing branches**



Charleston County Public Libraries Today

Timeline of Events



On average closed for 30 days per year to repair flood damage
\$160,000 flood related repair costs



Flooding at main entry



Mechanical Room high water line



High water line evident at front entry



Water seen throughout library

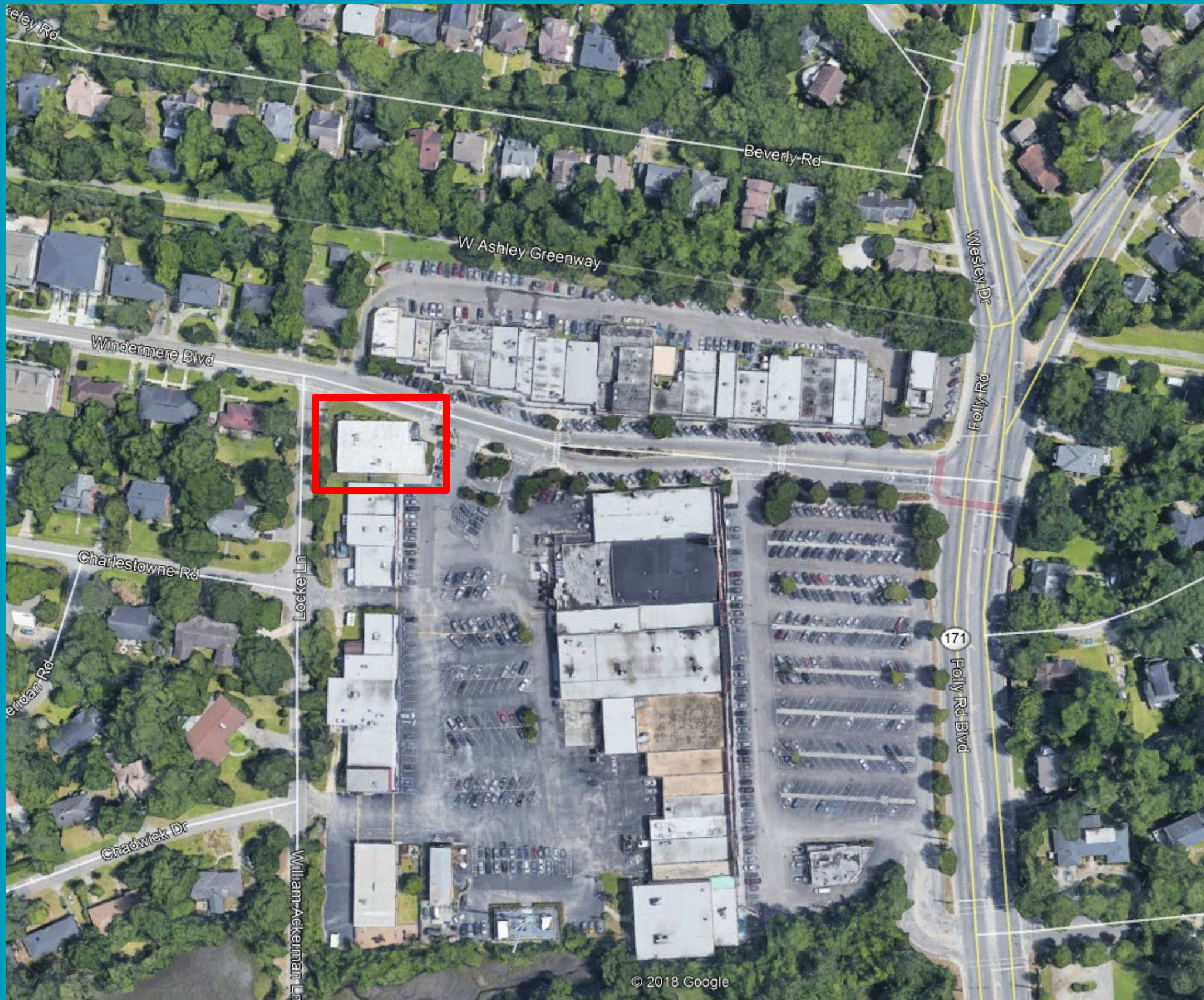


Pooling water at seating area



Water in restroom

Site Specific Challenges



- 4.3 feet below flood elevation
- Structure can withstand only 15 inches of water
- Water seeps through floor during high water
- Excessive ponding at entrance and parking

Constraints

- Referendum Funds – Funding amount only supports renovation of existing libraries to align with new library programs and services
- FEMA Regulations – Renovations over 50% of property value must meet full FEMA flood -proofing standards
- 2018 International Existing Building Code – Structural changes require a structural redesign and upgrade to current code
- City of Charleston Redevelopment Ordinance - Any land disturbance requires 50% drainage runoff reduction

Scope of Limited Renovation

May Include

- Limited refresh of furniture, restrooms, ceiling, lights, wall colors
- Change to children's area to improve some services

Not Included

- Updated spaces for newer programs and operations
- Effective flood mitigation measures
- Replacement of major building systems

Windermere Community

- Holds pick up
- Flexible use space
- Avid readers
- Internet access

Boutique Library

A smaller branch that can provide a focused range of specialized services that will meet the community needs



Bookmarks

Dallas, Texas



BOUTIQUE LIBRARIES





ATMOS
energy



Two potatoes

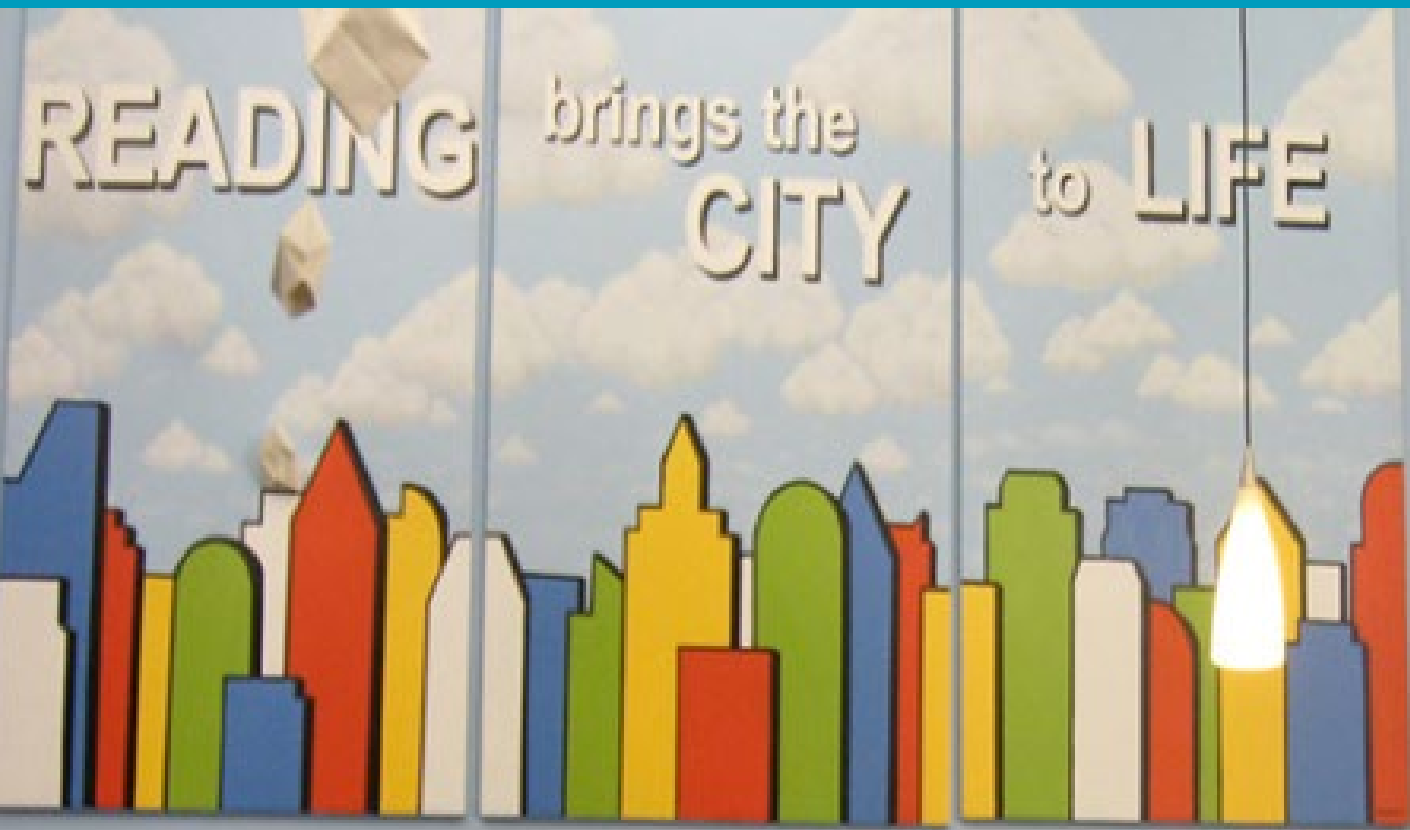
Three potatoes

Four potatoes

Five potatoes

Check It Outlet, Charlotte NC







Cafe Feel

Open floor space

Flexible seating

Welcoming to all



Holds Pick Up

Ample shelves

Near entrance

Easily Accessible



Store Front Window

Laptop Bar

Charging ability



Laptop Bar



Study Space

Reading Area

Flexible Seating





Storytime area

Reading Area

Flexible Seating



A

Minor refresh of existing location
operating within limitations/restrictions

B

More resilient location in this community to
offer opportunities for more current services

Feedback

Thank You From:



**CHARLESTON
COUNTY PUBLIC
LIBRARY**